

ANDRA UNDERGROUND LABORATORY

BURE - FRANCE

Installation of the GEOSCOPE WEB software for acquisition and data management.

The National Agency for the Storage of Nuclear Wastes (ANDRA) is located at Bure (Haute-Marne/ Meuse), and comprises of a 500m deep laboratory used for geo-scientific and technologic experiments.

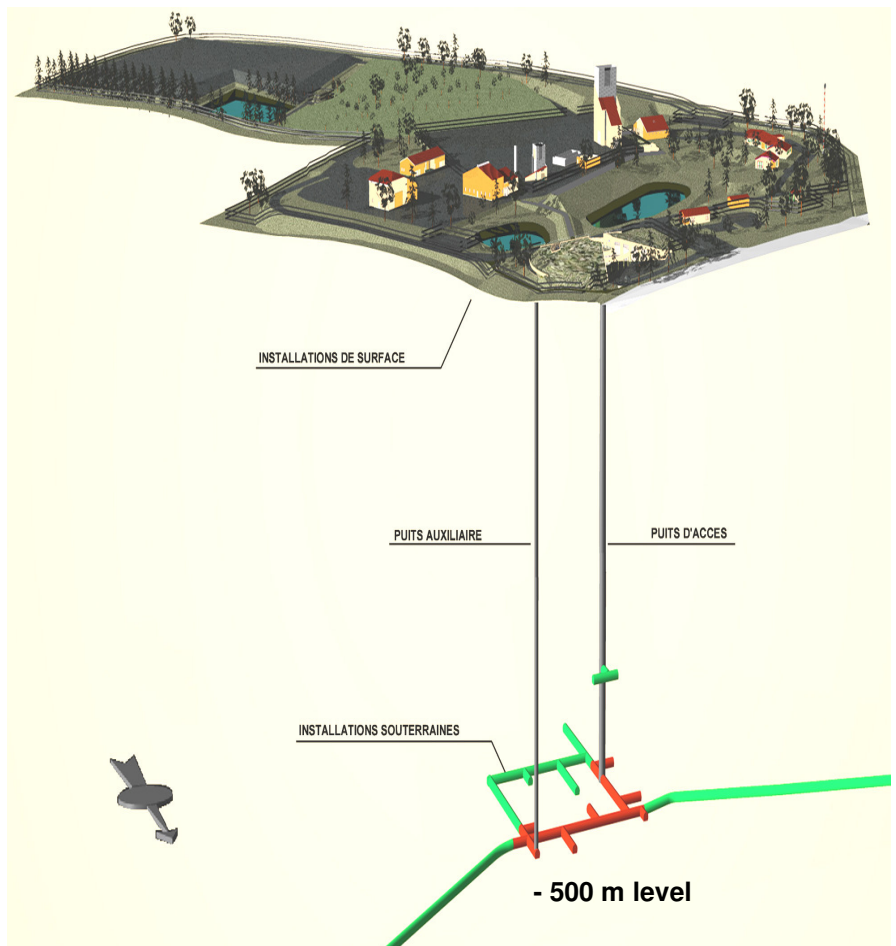
Sol Data, using the powerful GEOSCOPE WEB software, are in charge of the telemetric monitoring network used to capture scientific experimentation data obtained from a total 20 experiments ranging from hydrological, geotechnical, thermal and geochemistry.

The installation consists of:

- Providing access in real time to all of the latest laboratory data on a single system (GEOSCOPE Visualisation).
- Insuring the acquisition, storage and archiving of all the recorded information (GEOSCOPE Acquisition).
- Homogenising the data checking validation and presentation for all of the scientists (GEOSCOPE Alarm).

The 5 year long contract includes:

- The study and design of the telemetric network and access systems.
- Carrying out the installation of the whole system (hardware and software),
- System maintenance.



Above : Outline of the laboratory establishment

OWNER :	ANDRA
PROJECT DURATION :	2001 – 2006

SCOPE OF WORKS :

- Design and install the reporting system.
- Physical installation of the system:
 - 100 dataloggers,
 - 80 GEOSCOPE WEB computers connected by fibre optics to a backbone network,
 - Storage of more than 70 Gb of data,
 - 5km of optical fibre cable installed in the bottom gallery,
 - Remote server access (RTC/RNIS),
 - Secured access by server ACE.
- Maintenance of the acquisition and data management system.